

# BioStation 2

Fingerprint IP Access Terminal



BioStation 2 incorporates the latest Suprema technology in a beautiful exterior. It combines a new powerful processor. Suprema's next generation optical sensor and improved fingerprint sensing & capturing algorithm to offer unrivaled performance. BioStation 2 provides users with instant authentication and rapid data transfer to manage high volume data with ease. It is ideal for applications that requires versatility without compromise in style and performance.

# BioStation 2

## Fingerprint IP Access Terminal

### Features



#### Instant Matching & Authentication

- Improved matching algorithm, memory handling and powerful processor up to 20,000 matches per second



#### Rapid Data Transfer

- Optimal data transfer between the server and the device to transfer up to 5,000 user data in under a minute



#### Expanded Memory Capacity

- 1,000,000 fingerprint template
- 3,000,000 event logs



#### IP65 Certified Dust & Water Protection

- Ideal for harsh environment and outdoor installation



#### Versatile Interface

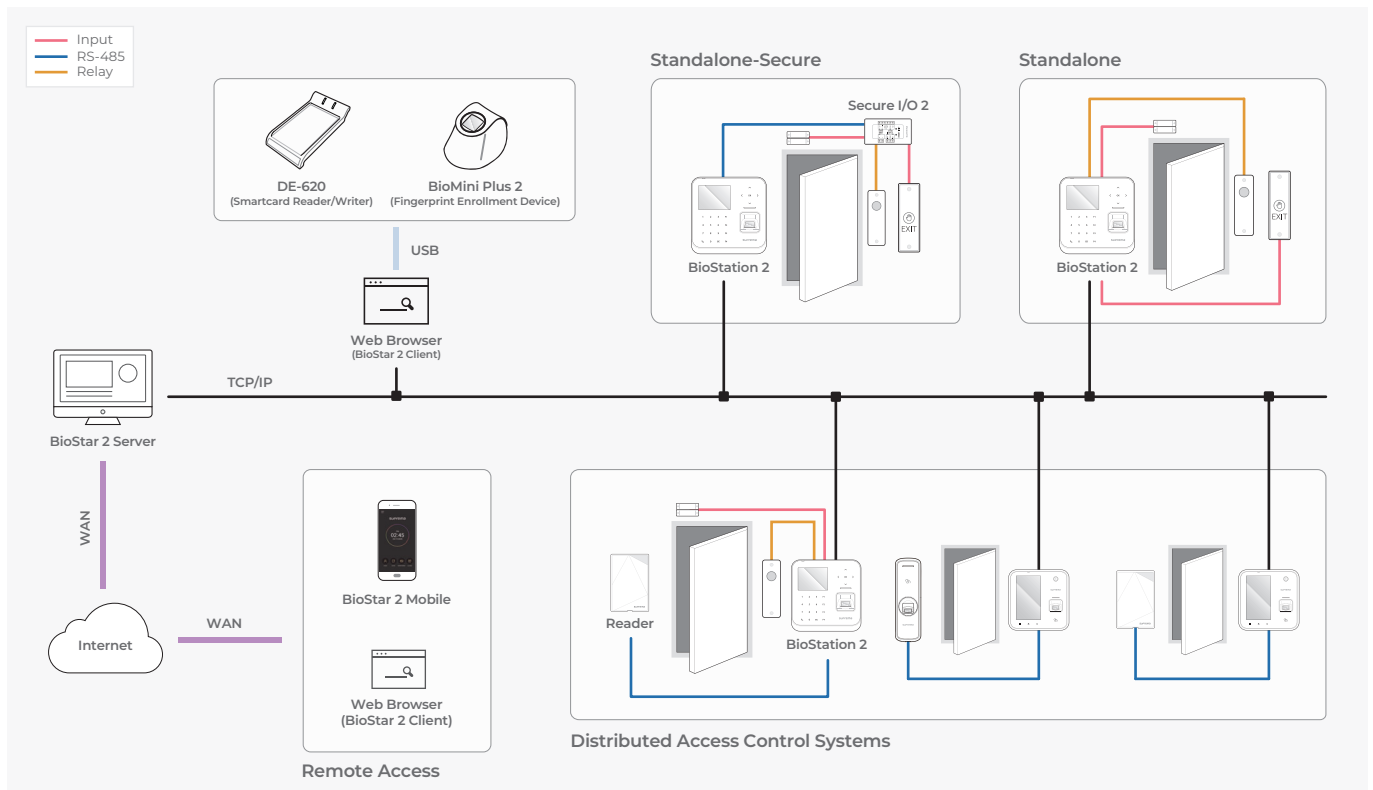
- Built-in WiFi and Power-over-Ethernet functionality for wide range of installation options

### Specifications

Biometric	Fingerprint			
Sensor Type	Optical Sensor (OP5)			
Template	SUPREMA / ISO 19794-2 / ANSI 378			
Extractor / Matcher	MINEX certified and compliant			
LFD	Not Supported			
RF Option	<b>BS2-OEPW</b>	<b>BS2-OHPW</b>	<b>BS2-OIPW</b>	<b>BS2-OMPW</b>
	125 KHz EM	125 KHz HID Prox	13.56MHz MIFARE, MIFARE Plus, DESFire EV1/EV2, FIDELIA, ICCLASS SE55R, NFC, ISO14443A/B, ISO15693	13.56MHz MIFARE, MIFARE Plus, DESFire EV1/EV2, FIDELIA, NFC, ISO14443A, ISO15693
CPU	1.0 GHz Single Core			
Memory	8GB Flash + 256MB RAM			
Max. User	500,000 (1:1), 20,000(1:N)			
Max. Template	1,000,000(1:1), 40,000(1:N)			
Max. Logs	3,000,000(text)			
LED	Multi-Color			
Sound	16-bit Hi-Fi			
Ethernet	Supported (10/100 Mbps, auto MDIX)			
RS-485	1ch Host or Slave (Selectable), OSDP V2.1.6			
Wiegand	1ch Input, 1ch Output			
TTL	2ch Inputs, 2ch Outputs			
Relay	1 Relay			
PoE	Supported (IEEE 802.3af compliant)			
Tamper	Supported			
Power	Voltage: DC 12V Current: Max. 1A			
Operating Temperature	-20°C ~ 50°C			
Operating Humidity	0% ~ 80%, non-condensing			
Dimensions (WxHxD, mm)	142 x 145 x 45 mm			
Unit Weight	440g			
Certificates	CE, FCC, KC, RoHS, REACH, WEEE			

\* DESFire EV2 cards are supported by having backward compatibility of DESFire EV1 cards. CSN and smart card functions are compatible with BioStation 2.

### System Configurations



### Suprema Inc.

17F Parkview Tower, 248, Jeongjail-ro, Bundang-gu, Seongnam-si, Gyeonggi-do, 13554, Republic of Korea  
 T +82 31 783 4502 E sales\_sys@supremainc.com www.supremainc.com



For more information about Suprema's global branch offices, visit the webpage below by scanning the QR code.  
<https://www.supremainc.com/en/about/contact-us.asp>