

SUPREMA CASE STUDY



# Youngone Group

Express Systems Limited / Bangladesh

## THE CUSTOMER

Youngone began manufacturing sportswear and down jackets in Seongnam, South Korea and has since grown to become the premier manufacturer of outdoor apparel, footwear and gear. Today, they own and operate production facilities in Bangladesh, Vietnam, China and El Salvador. This integrated support system has enabled them to play an important role in the socio-economic development of the countries they work in. Their broad product and service portfolio depends on continuous investment in their people and has contributed to Youngone's exceptionally diversified group.



## FAST FACTS

### LOCATION

Youngone Group  
/ Chittagong and Dhaka, Bangladesh

### YEAR OF COMPLETION

2018

### APPLICATION

Access Control  
Time & Attendance  
Enrollment Scanner

### TECHNOLOGY

Time Attendance and Access Control  
Deployment & Integration

### PROJECT SIZE

70,000 Employees

### SUPREMA PARTNER

Express Systems Limited

### SOLUTIONS

BioStation L2 : 936 EA  
BioMini Plus 2 : 6 EA  
BioStar 2 Software - Ent

## THE CHALLENGE

Youngone Group has used various brand fingerprint devices over the last five years. Due to technological change and increase of number of Employees, Youngone required to upgrade security for various export processing zones in Bangladesh. Youngone required centralized fingerprint systems which will be installed within eighteen different buildings in the Export Processing Zones at Dhaka & Chittagong.

## THE SOLUTION

The Express Systems Limited in Bangladesh who represents Suprema as a valued Partner replaced the entire existing system to Suprema Biometric Solutions by their expert technical professionals in various Export Processing Zone location in Bangladesh. Suprema's technical, hardware and performance complied Youngone's requirement and project management capability of valued partner, Express Systems Limited awarded the project in Bangladesh. Suprema's Platform also integrated and fitted their security and payroll compliance perfectly. Express Systems Limited also enrolled 70,000 numbers of employees with BioMini Plus 2 at the premises of various Export Processing zones in Bangladesh. BioStation L2 which features incredible matching speed was installed and integrated with Suprema BioStar 2 software & third-party ERP software. The BioStar 2 Platform provided a comprehensive solution for Access Control and Time & Attendance, which highly improved Youngone's daily operational efficiency.

## KEY BENEFITS

### 1) Secured and Convenient System

Youngone can operate entry & exit details of 70,000 numbers of Employees individually and fulfil requirement of Payroll of company which also comply with BGMEA (Bangladesh Garment Manufacturers & Exporters Association) to avoid any payroll disputes.

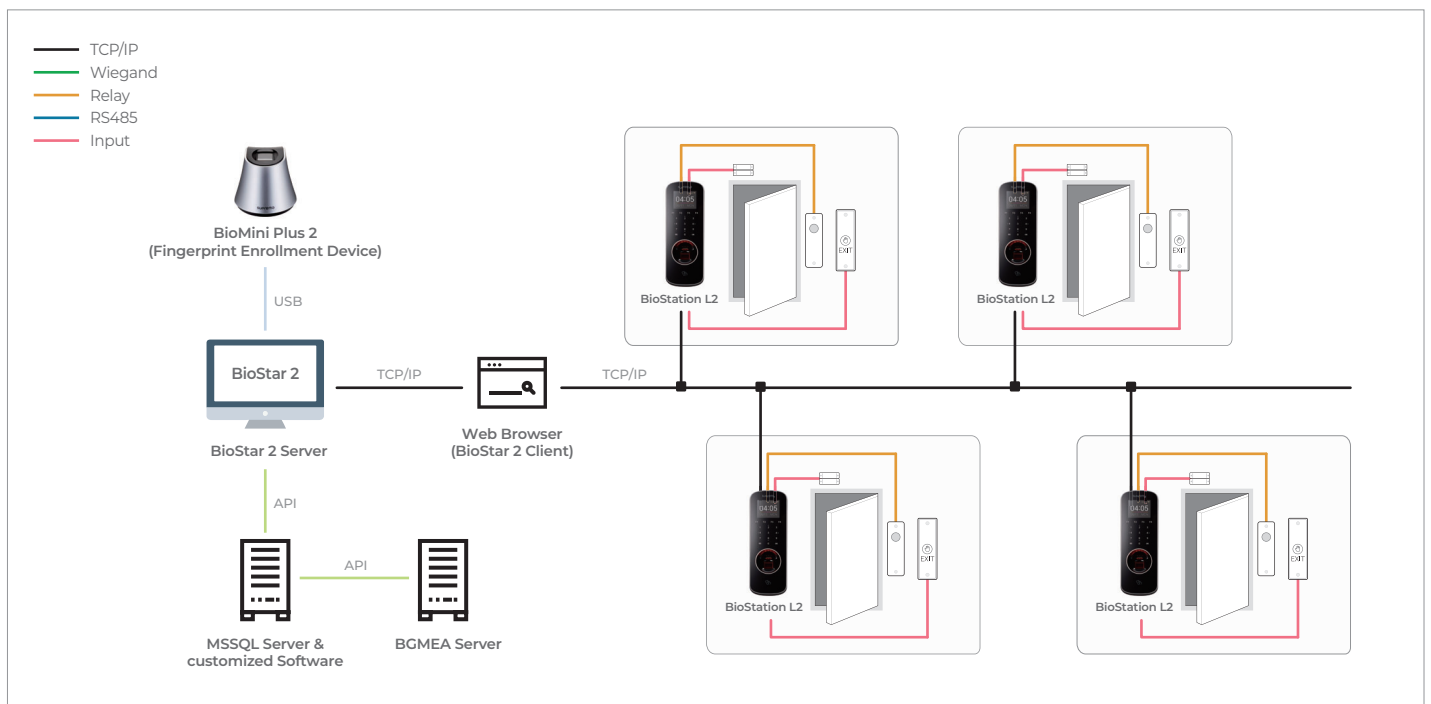
### 2) Total Management Platform

BioStar 2 Access Control and Time & Attendance software fully provides all access control features and manages the Time & Attendance solution with details performance for each employee.

### 3) Fulfillment of Management Requirement

Suprema's time & attendance management solution simplifies employee timesheet monitoring, calculation of work hours and collection of time & attendance data. Also you can set up various types of work schedule/work shift. It enables human resources management and time & attendance management in one system since you can easily connect with HR or ERP systems and see personalized time & attendance reports and calendar view at a glance.

## SYSTEM CONFIGURATION



BioStar 2 Web-based Open Integrated Security Platform

BioStation L2 Fingerprint IP Access Terminal