

BioEntry R2

Compact Fingerprint Reader



Suprema BioEntry R2 is a compact fingerprint reader exclusively designed for centralized access control systems. Packed in a slim, million-type design, BioEntry R2 provides high-definition fingerprint image capture, minutiae extraction as well as dual-frequency multi RF card reading capability. Combined with Suprema's intelligent biometric controller, the CoreStation, BioEntry R2 completes biometrics-driven access control system with enhanced simplicity and level of security of centralized system topology.

SUPrema
SECURITY & BIOMETRICS

BioEntry R2

Compact Fingerprint Reader

Features



Multi RFID card reading

- LF(125kHz), HF(13.56MHz) dual-band
- Reads all primary card types (EM, MIFARE, MIFARE Plus, DESFire EV1/EV2/EV3, FeliCa)



Field-proven fingerprint technology

- Latest Suprema fingerprint algorithm
- High-precision OP6 optical sensor



Standardized communication

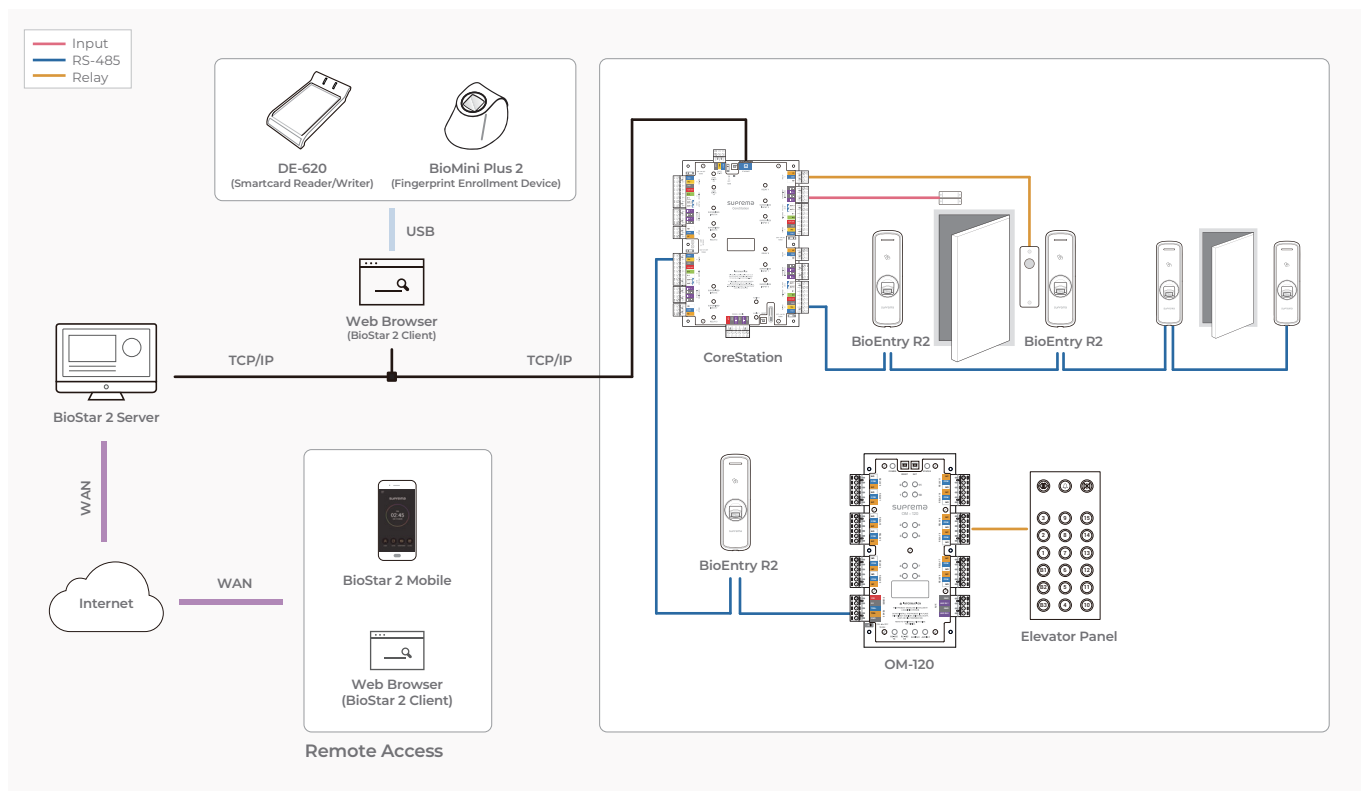
- Open Supervised Device Protocol (OSDP)

Specifications

Model Name	BER2-OD
RF Option	125kHz EM & 13.56MHz MIFARE, MIFARE Plus, DESFire EV1/EV2/EV3 ^① , FeliCa
RF Read Range ^②	MIFARE/DESFire: 50 mm, EM/Felica: 30 mm
Biometric	Fingerprint
Sensor Type	Optical Sensor (OP6)
Template	SUPREMA / ISO 19794-2, ANSI 378
Extractor / Matcher	MINEX certified and compliant
Crypto Chip	Supported
CPU	1.0 GHz
Memory	32MB Flash + 32MB RAM
LED	Multi-Color
Sound	Multi-tone Buzzer
RS-485	1ch Slave
RS-485 Communication Protocol	OSDP V2 compliant
Tamper	Supported
Power	Voltage: 12 Vdc, Current: Max. 0.2 A
Operating Temperature	-20°C ~ 50°C
Operating Humidity	0% ~ 80%, non-condensing
Dimensions (WxHxD, mm)	50.1 x 164 x 38
Weight	158g
Certificates	CE, UKCA, KC, FCC, RoHS, REACH, WEEE

^①DESFire EV2/EV3 cards are supported by having backward compatibility of DESFire EV1 cards. CSN and smart card functions are compatible with BioEntry R2.
^②RF read range will vary depending on installation environment.

System Configurations



Suprema Inc.

17F Parkview Tower, 248, Jeongjail-ro, Bundang-gu, Seongnam-si, Gyeonggi-do, 13554, Republic of Korea
 T +82 31 783 4502 W www.supremainc.com



For more information visit our website below by scanning the QR code.
<https://www.supremainc.com/en/about/contact-us.asp>